



Inspired Security



/ Access Control / Intrusion / Video / Integration Platforms /

Tyco is the world's largest pure-play fire and security company. Tyco provides more than three million customers around the globe with the latest fire protection and security products and services. A \$10+ billion company, Tyco has more than 69,000 employees in nearly 50 countries serving the world's most demanding environments, including banking and financial services, oil and gas, marine, government, healthcare, retail, home security, transportation and commercial and industrial.

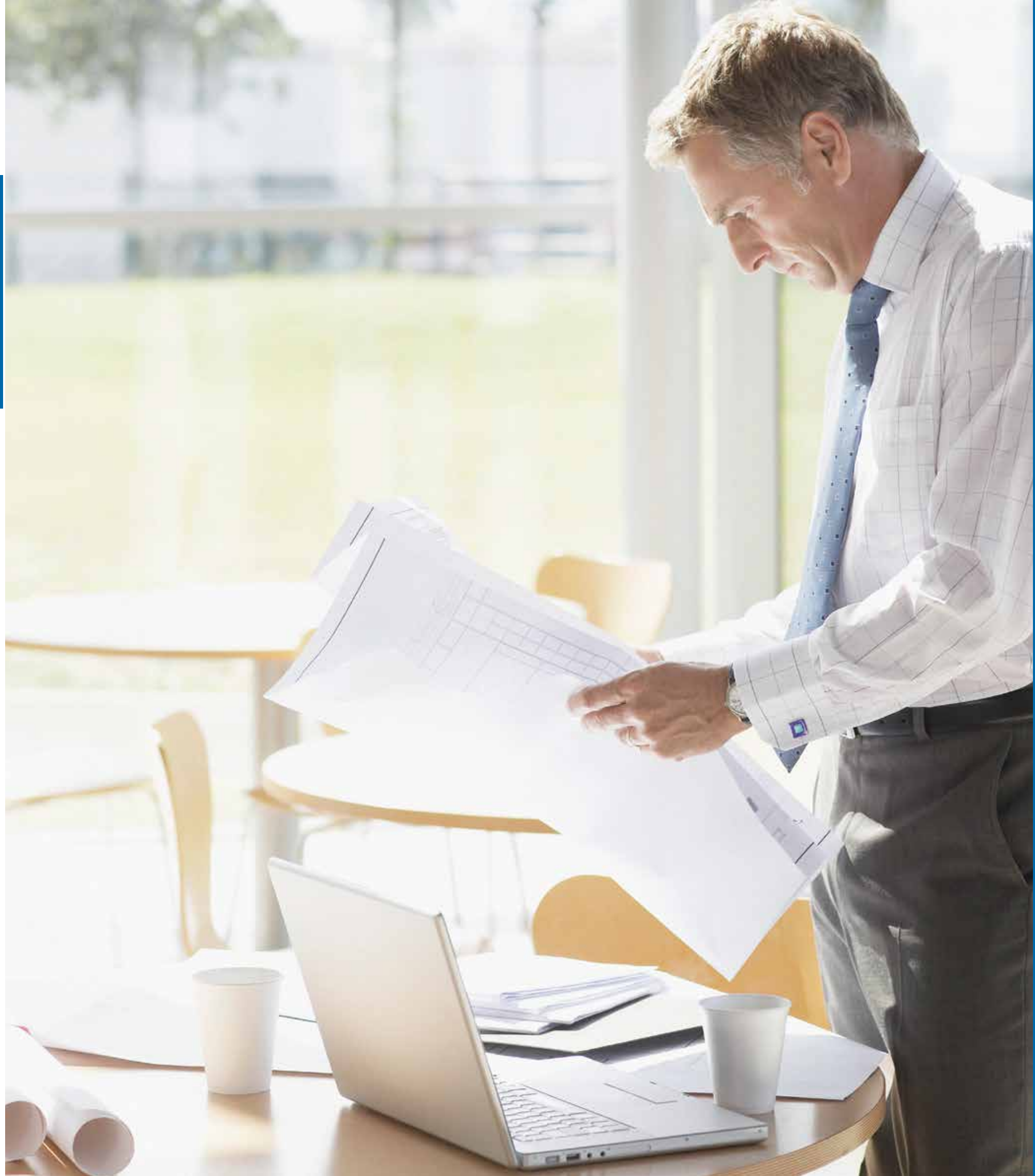
Tyco Security Products

Tyco Security Products, a business unit of Tyco International, is a unified group of world-leading access control, video and intrusion brands. These brands — American Dynamics, Bentel, CEM Systems, DSC, Kantech, Software House, Sur-Gard and Connect 24 — have more combined years of experience in the security industry than any other group in the world. Our security integration platforms, built by our developers from across all product disciplines, allow our customers to see more, do more, and save more. Our solutions today are designed to be compatible with the technology of tomorrow.

In more than 40 offices with more than 2,000 employees around the world, we support our global, local, and regional customers to the highest level with sales, technical support and customer service before, during, and after the sale. Our world-class channel of dealers, integrators and distributors are trained to help customers with any complex problem in virtually any industry — retail, residential, gaming, transportation, healthcare, finance, education, government, POG to name but a few.

Pride in our products and our service is what drives us. Unlike some companies that simply rebrand other manufacturers' goods, we can say with certainty that if it has our brand on it, it is backed by thousands of support, service and quality assurance personnel. And with the most trusted brands in security in one portfolio, we offer the most comprehensive range of premium solutions in the industry to our customers. An unbeatable combination from a single source.

One company with one vision and one goal to define the future of security.





American Dynamics products are the world's most widely adopted line of video-based security and integration solutions. Most of the top Fortune 500 companies choose our products to protect their assets, information and people

Pioneering

American Dynamics CCTV and video technologies have earned a reputation for innovation, reliability and manufacturing excellence around the globe. Founded in the early 1970s in New York, they later merged with Robot Research Inc and together made pioneering breakthroughs in security technology. As testimony to this NASA, in the early 1970s, utilised video transmission technology designed by Robot Research to transmit the very first 'live' video from space.

Continuing with their pioneering breakthroughs, American Dynamics was the first to introduce the most popular and easy to use digital video management system in the industry: Intellex®. In addition to this powerful DVMS the American Dynamics portfolio also includes the VideoEdge IP NVR, MegaPower Matrix switchers and the entry level TVR, along with keyboards, multiplexers, monitors, and video accessories — in fact everything required for a complete, state of the art video surveillance system.

Integration

With a powerful integration platform, American Dynamics solutions work seamlessly with Software House, Kantech and CEM Systems access control products, as well as Intrusion products from DSC, Bentel and Visonic and other important business applications. These provide customers with greater ease of operation and faster access to the information they need in critical situations. American Dynamics continues to invest in R&D to evolve its product range and services to meet the diverse and growing needs of its customers.

Industry Leader

Our technology, while market-driven, is developed with the security professionals throughout the industry in mind. Our award-winning Intellex revolutionised digital video recording and Intellex IP adapts this leading-edge technology for network video. Our programmable dome cameras are sophisticated in design, seamlessly integrate with other products and are easy to install. Our matrix switchers were the first to combine scalability with high density and rank the most reliable in the industry.

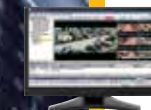
Watch Less See More



Digital Video



IP Solutions



Analytics



www.americandynamics.net

Exacq Technologies is a leading manufacturer of video management system (VMS) software and servers used for video surveillance. Known for its ease of use, the exacqVision cross-platform VMS software is widely used across many applications. It is readily available on factory installed exacqVision hybrid and IP camera servers or on commercial off-the-shelf servers.

Managing Video Surveillance Made Easier

Since 2002, Exacq Technologies has been developing powerful, yet highly intuitive, cost-effective video surveillance products. From small, single-camera systems to large, scalable deployments with thousands of cameras, Exacq has the ideal security solution for nearly any application. The exacqVision product line is well-known for its simplicity and flexibility. exacqVision video security products improve surveillance by allowing end users to increase the protection of both people and property.

The exacqVision VMS software gives end users an easy-to-use, yet feature rich system to manage live and recorded video for a variety of needs. The intuitive exacqVision VMS software line includes software designed for stand-alone systems all the way to complete enterprise systems. The unique exacqVision Edge VMS installs directly on a compatible IP camera to provide a complete solution without the need for a separate server. Customers can access live and recorded video from multiple exacqVision servers with the freely distributed client user-interface available for

Windows, Mac or Linux. Compatible with more than 1,700 IP camera models and a large number of access control systems, point-of-sale (POS) systems, and retail and video analytics, the exacqVision VMS is one of the industry's most flexible solutions.

The exacqVision line of hybrid and IP camera servers provides a complete, out-of-the box VMS solution. exacqVision hybrid servers seamlessly integrate analog and IP cameras, allowing customers to utilize their existing surveillance system and easily upgrade to the latest IP technology. A single hybrid server can accommodate up to 192 analog and IP cameras combined with up to 80TB of storage. exacqVision IP camera servers are designed to accommodate IP cameras and encoders. Every exacqVision server comes with pre-loaded exacqVision VMS software and a 3-year warranty with a software subscription agreement (SSA) included. Hybrid and IP camera servers are all scalable, cross-compatible and unified through the freely distributed exacqVision client software. Access to exacqVision servers is also freely available on most internet browsers and through the free exacq Mobile app available for iOS, Android, Kindle Fire and Windows Phone 8.

Exacq has established a strong brand presence in the educational, corporate, retail and healthcare markets. As a leader in video security, Exacq is committed to staying at the forefront of the industry and providing its customers with the latest VMS functionality.

exacqVision Products Available Worldwide

The exacqVision VMS software and servers are manufactured both in the United States and Europe. The product line is sold via distribution throughout the world.



VMS Servers
& Storage

VMS Software

Remote Apps





Illustra, from Tyco Security Products, features the widest range of IP cameras in the industry: including the low-cost, reliable Essentials Series, to the mid-range, highly versatile Flex Series, to the feature-rich, ultra high-resolution Professional Series. Illustra also features an Edge Series which provides a complete recording solution with built-in VMS software.

Clarity is everything

Illustra develops some of the industry's most technologically advanced IP cameras. These technologies are used across all vertical markets helping retailers, large and small protect their investment, stock and profit margins. Security systems built with Illustra IP cameras also assist governments in securing ports and borders, ensure hospitals maintain the safety and privacy of their patients and are ideal for use in the education market where it is important to deploy cost effective, yet high quality surveillance systems.

Used with a vast number of ONVIF-compliant video and access control management systems, including those from Tyco Security Products, Illustra is part of an end-to-end security and surveillance solution that not only keeps what you value safe, but enables your business to operate effectively.

Variety with quality

Within the Illustra brand family are four distinct product lines - Pro, Flex, Essentials and Edge lines of IP cameras.

The Pro Series offers the brand's high-end, highest performance IP cameras, including high-megapixel, quick-responding ONVIF-compliant fisheye, PTZ, mini-dome and box models.

The Flex Series is a mid-range line of bullet, mini-dome, box and wireless cameras designed to provide affordable, high-quality megapixel video with key features such as high-resolution, wide dynamic range and 3D noise reduction.

The Essentials Series from Illustra is a more budget-conscious range — with an indoor/outdoor mini dome and a bullet camera — aimed at small to mid-size businesses seeking high quality, but at affordable prices.

The Edge Series encompasses cameras from the Pro series with the addition of the exacqVision video management system pre-loaded on the camera for server-style recording without the server.

The Complete IP Camera Range



Illustra Pro



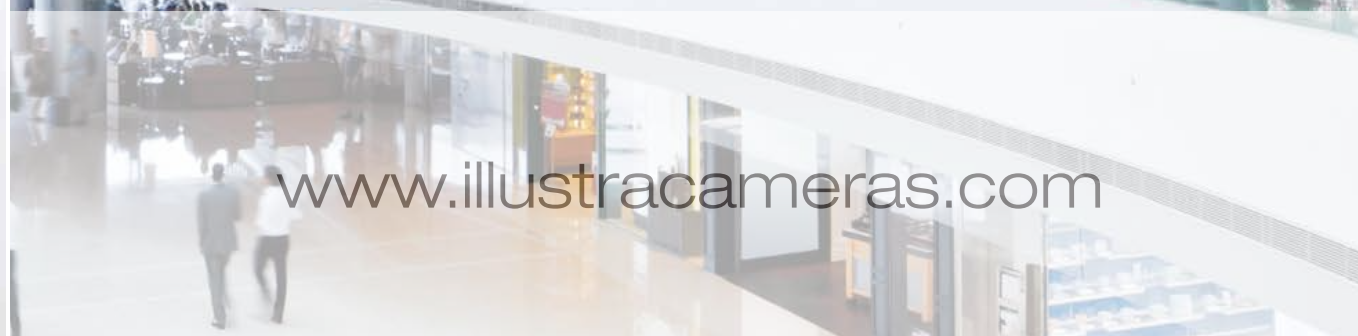
Illustra Flex



Illustra Essentials



Illustra Edge



www.illustracameras.com

Kantech offers a full suite of feature rich and cost effective access control products that are reliable, easy to install and fully scalable

Why Access Control?

Nothing is more vital to the health of an organisation than making sure that its people, material assets and operations are safe and secure. Access control addresses the full scope of risks that might arise, including risks that other security systems such as burglar alarms and intrusion detection simply are not designed to handle.

By preventing people from entering places where they do not belong, access control protects against theft as well as liability and disruption to your operations. Access control can also integrate with other security and operational systems to give you a comprehensive, cohesive management tool.

Tracking Access

One of the biggest advantages that our access control systems offer is the ability to determine quickly who may have gained access to critical areas before and after an incident. Even our smallest, single door applications have reporting available that shows an audit trail of door access activity, while our mid-range and large-scale systems can provide in-depth, user-defined documentation.

Logistics

Profitability at warehouses and distribution centers depends on efficiency and security: making sure the right people are in the right place at the right time, and keeping out those who should not be there. Our access control systems help you do this, controlling access to improve employee productivity and punctuality.

Workplace Safety

Certain work environments can be hazardous, especially where there is heavy equipment or intense activity. Access control systems from Kantech help you ensure that only authorised individuals enter these areas.

Risk Management

By restricting who gains entry to your property, our access control systems limit your exposure to liability for "slip and fall" cases while also reducing the risk of workplace violence and more. With litigation and work-related assaults costing businesses billions of dollars each year, organisations simply no longer can afford to do without this kind of protection

Powerful, Simple and Secure



Software



Hardware



Readers & Cards



Accessories

SOFTWARE HOUSE

From Tyco Security Products

Software House technologies are currently installed in more than 5,500 installations worldwide, touching all vertical markets. Over 170 of the Fortune 500 Companies use C•CURE

Total Solution

Software House has established itself in the security industry as an innovator by being the first company to apply sophisticated database management software to access control and security management systems. At a time when most security companies focused on selling hardware, Software House identified and developed a market niche for sophisticated software-based computerised solutions to manage and integrate diverse security hardware devices.

Software House solutions include the innovative C•CURE 9000 security and event management system and the flagship C•CURE 800/8000 access control solution. Combined with a suite of powerful door controllers and the industry's first true multi-technology reader, Software House solutions are among the most powerful in the industry. Software House security solutions are currently installed in more than 5,500 installations worldwide, touching all vertical markets. Over 170 of the Fortune 500 Companies use C•CURE.

Increase Efficiency

We continue to offer complete solutions, providing products that increase efficiency and fit any budget while maintaining the same high standards for performance and quality. Our warranties are the most comprehensive in the business. You will receive full support throughout the entire life cycle of each product.

Full Support

Our applications engineers are available to assist with system design before you buy. Our technical support staff will answer your post-sale questions on installation and maintenance. We offer training programs at all skill levels to teach your staff everything they need to know about installation and configuration.

Access Control to Total Control



Software



Hardware



Readers &
Cards



Accessories

www.swhouse.com

CEM's culture is to remain at the cutting edge of access control technology through the design and development of high quality solutions that meet the unique needs of customers.

CEM Systems

CEM Systems is a leading provider of access control and fully integrated security management systems. With over 25 years experience in the security and IT industry, CEM uniquely manufactures both the AC2000 hardware and software, offering one of the most comprehensive, resilient and reliable systems available.

AC2000 access control and security management system is a highly stable and proven solution for installations where security is of paramount importance. AC2000 offers a powerful suite of client and browser based applications including central alarm monitoring, integrated command and control, sophisticated ID badging, visitor management, web reports and much more. AC2000 Lite is a feature rich, yet cost effective access control system available for the small to mid-range markets. Used by many of the world's leading airports for over 25 years, AC2000 Airport is an aviation specific security management system.

The AC2000 system range is flexible to meet unique customer requirements as well as having virtually unlimited expansion and integration capabilities. CEM has partnered with leading third party security suppliers offering seamless integration to video, fire and intrusion systems providing customers with one fully integrated security management solution.

CEM solutions are accessible to a range of industries and different sized sites, and have been successfully installed throughout the world at airports, ports, petrochemical plants, universities, corporate premises and more. From a small building to a large multi-site facility, CEM has an innovative access solution to meet your needs.

Innovation

CEM's greatest asset is its people. With an innovative company culture and skilled professionals CEM consistently leads the industry in the development of software and hardware. Several industry firsts include; emerald™ a multi-functional intelligent touch screen access terminal, portable handheld card readers, Ethernet based IP card readers, fully integrated biometrics and Power over Ethernet Plus (PoE+) access control.

Support

Central to CEM's success is the commitment to support customers with a fast, tailored and professional experience. A culture of support excellence ensures that CEM customers are provided with the highest level of pre-sales support, project management and training services, as well as technical support for ongoing post installation enquiries.

Innovative Access Control Solutions



Software



Hardware



Readers & Cards



Accessories





Proximex™ develops innovative solutions that integrate new and existing security systems and technologies into a centralized command and control center. Proximex Surveillint™ from Tyco Security Products is the premier physical security information management (PSIM) solution for surveillance, event monitoring, incident handling and operational risk management.

Why Proximex?

Surveillint provides security teams the solutions they need to support the bigger security picture, improving incident response and improving operational efficiencies. Surveillint is built from the ground up with a state-of-the-art service oriented architecture (SOA). The result is a highly-scalable, enterprise-class solution with quick deployment, delivering high availability and failover capabilities with an industry standard IT architecture.

Proximex Solutions

Surveillint™, the premier solution to integrated situational awareness, offers advanced features to help security operators assess and resolve incidents quickly. Visual displays, like GIS maps and video management, showcase resource management during an emergency.

Business Logic Manager is the best in the industry to help organizations design and implement policies and processes. Incident and trend reports let management analyze and understand security situations and decide if future policy changes are appropriate. Surveillint is the only PSIM solution that monitors the health of security networks, ensuring that all sensors are up and running, or sending notifications of problems before an incident occurs. In addition, Proximex

joined the ArcSight CEF program to provide logical security support through Surveillint. This integration makes Surveillint the first PSIM solution to enable correlation of events and information from physical, logical and/or network security systems to catch coordinated security attacks.

EZ Track™, an industry first, makes tracking suspects across multiple camera views as easy as the click of an arrow—trail suspects without the need to memorize the many camera IDs and locations or manually search recorded video clips.

Surveillint Web Console deploys quickly to provide situational awareness and incident intelligence for users outside of the security control center.

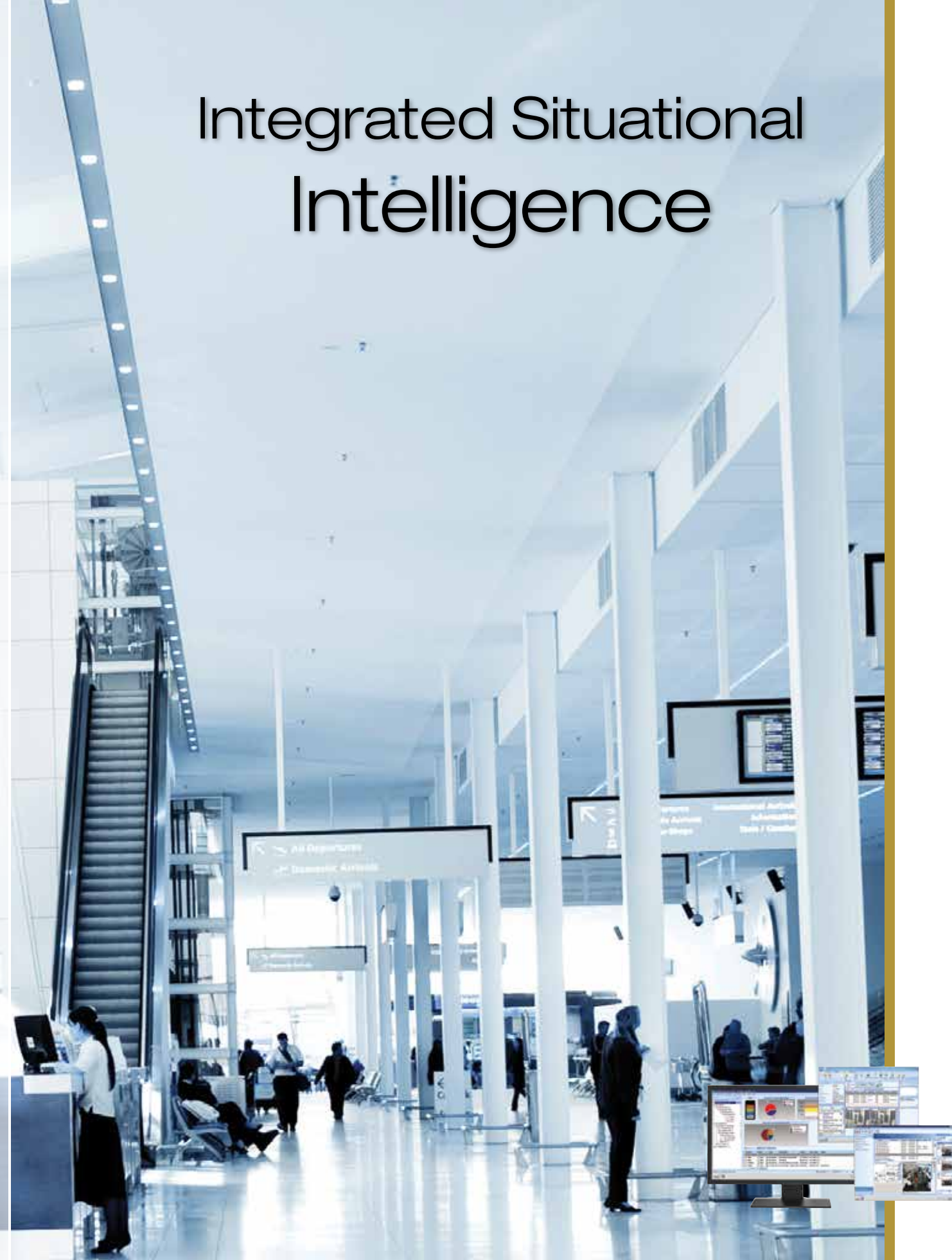
Surveillint Mobile Console is a mobile app that expands the reach of Surveillint to officers in the field—no need to translate incident information verbally and risk miscommunication.

Integration Modules make it easy to maintain and expand security environments. Surveillint leads the market in the number of available and most-complete bi-directional integration modules for existing and new security systems and technologies.

Geographic Information System (GIS) Modules monitor and respond to incidents while leveraging the rich set of geographic information available from enterprise and online sources including Microsoft Bing Maps and ESRI ArcGIS.

SURVEILLINT
THE CORE OF YOUR INTELLIGENCE

Integrated Situational Intelligence



Software

www.proximex.com





From Tyco Security Products

Elpas is a global provider of scalable Triple Technology Passive & Active RFID/RTLS Safety, Security and Visibility Solutions designed to enhance individual safety, reduce property theft, lower labor costs, lessen negligence litigation and facilitate industry guideline compliance.

Superior Technology to Protect What Matters Most

Elpas delivers a full suite of safety, security and visibility solutions to help protect people and assets in a variety of applications such as healthcare, museums, smart offices and correctional facilities.

Elpas' triple technology RTLS solutions can quickly determine physical location, while providing duress alarm and tracking alert functionality. This helps companies track and prevent the theft of proprietary information or equipment, while facilitating compliance with industry-relevant guidelines and optimizing business productivity.

Integration with 3rd Party Solutions

Elpas systems integrate with many third party platforms including Access Control, Video, Nurse Call and a variety of management systems, such as those offered by Software House and American Dynamics. This holistic approach to security provides real time visibility of objects and people, married with identity and personnel information. This powerful integration also provides a convenient hands-free access control solution for security-critical facilities.

Convenient and Reliable

Elpas delivers cost-effective and scalable safety and security solutions that are simple to use and very reliable. These solutions are backed by Professional Service personnel globally. A wide range of training and post-installation consulting offerings help customers get the most from their security and logistics investments.

Safety, Security & Visibility



Active RTLS
Tags & Badges



Infrastructure



Management
Software

www.elpas.com



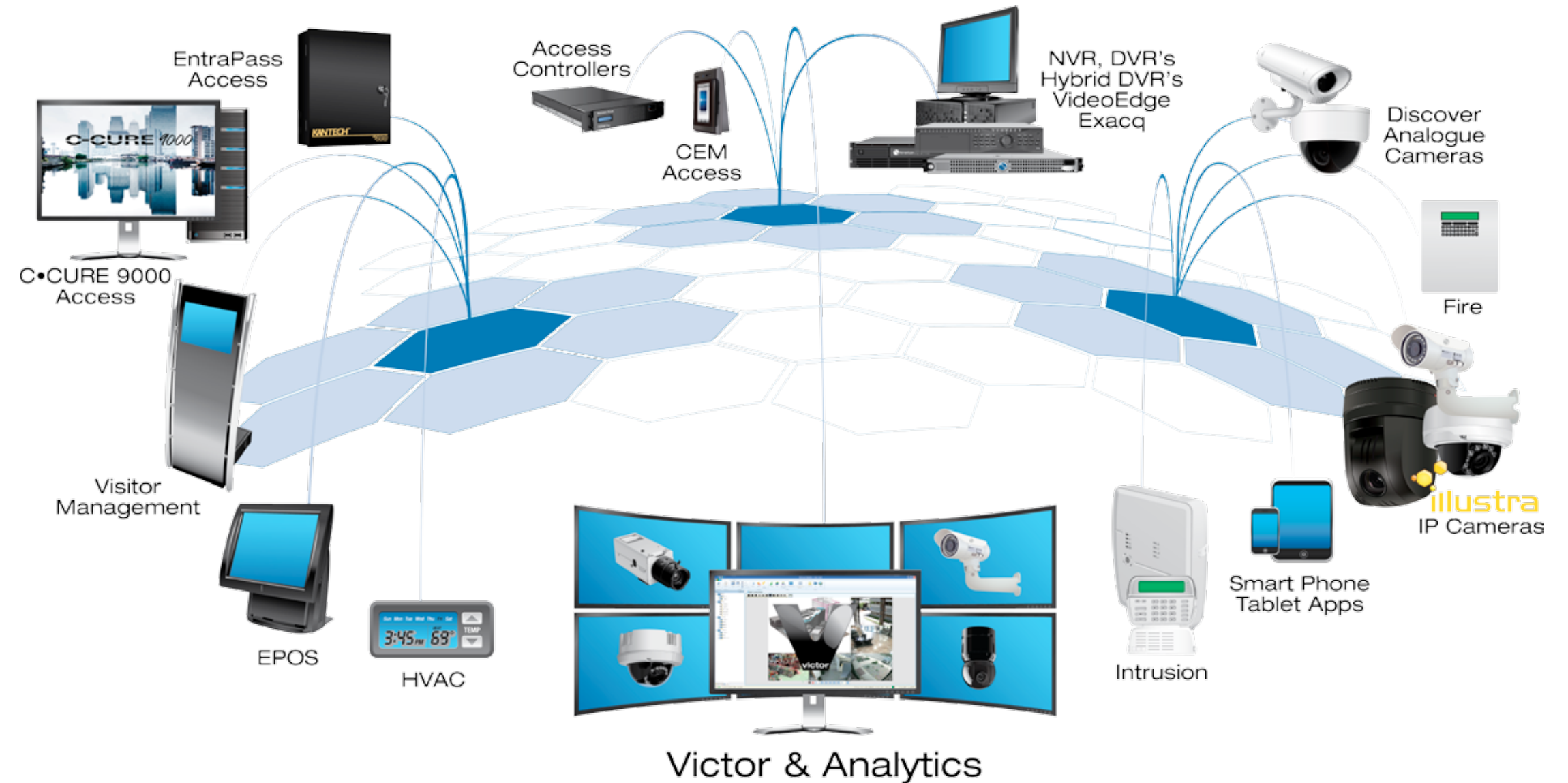
The flexibility and seamless integration of our products is why we are the choice of many of the world's leading commercial, government, health and educational organisations.

Integration

From loss prevention to operations and risk management, a powerful integrated solution from Tyco Security Products can help you better manage your security and enhance your business performance. Utilizing advanced technology in video surveillance, electronic access control and intrusion detection solutions that can interface with IT networks, Tyco Security Products is committed to offering integrated solutions that can elevate security to a whole new level.

American Dynamics solutions work seamlessly with Software House, Kantech and CEM Systems access control products as well as intrusion products from DSC and Bentel, along with other important business applications. These provide customers with greater ease of operation and faster access to the information they need in critical situations.

Innovative Technology with Seamless Integration



The flexibility and seamless integration of our products is why we are the choice of many of the world's leading commercial, government, health and educational organisations.

Integration Example 1

Live Video Pop-up - An event occurs, be it a door forced, card traced, PA Button, PIR tripped, camera motion detection etc. The camera zooms to a preset configuration and the live video appears on the C•CURE or Kantech client workstation.

Integration Example 2

Video from Graphics - From interactive and dynamic graphical representations of buildings/floor plans, live video views of single and multiple cameras can be called to screen.

Integration Example 3

Multiple Streaming of Events - As an event occurs you can prioritise/manage events and live video to appear only on certain workstations or for specific users to better manage time of operators

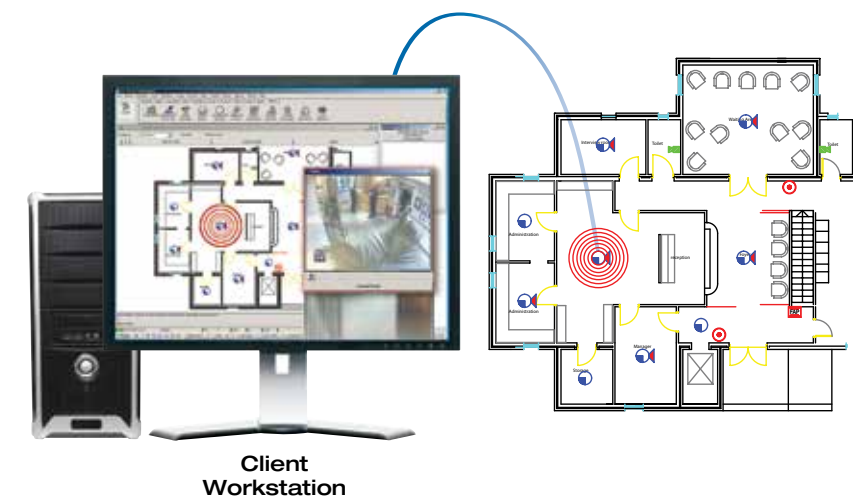
Integration Example 4

Retrospective Video with Autoarchive - Following an event retrospectively view the tagged video associated with that event. This means that critical video can be automatically or manually streamed to the network server, or NAS, in order to preserve video information for later viewing and disaster recovery.

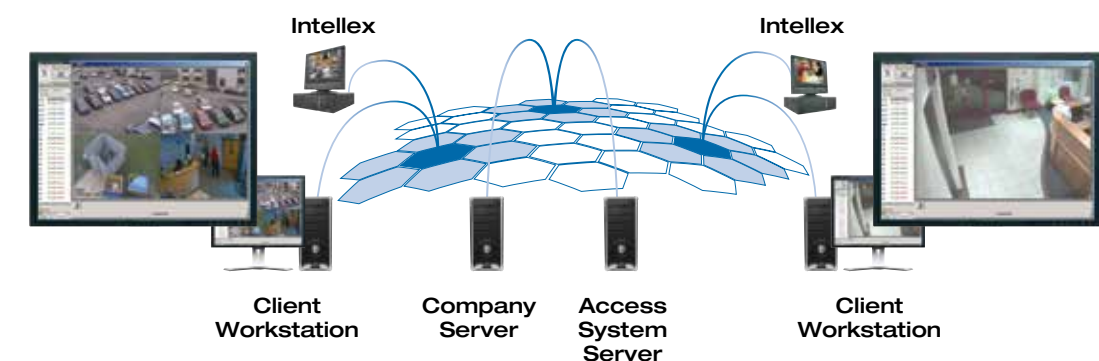
1 Live Video Pop-up



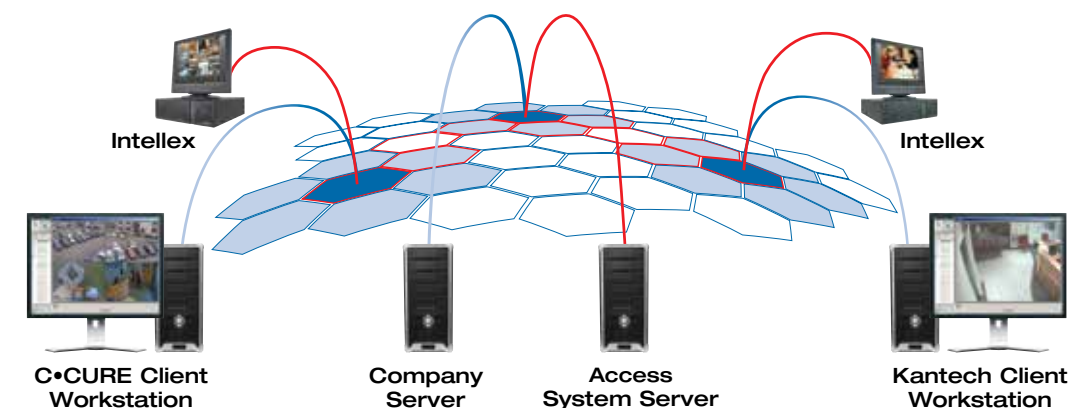
2 Video from Graphics



3 Multiple Streaming of Events



4 Retrospective Video with Autoarchive





From Tyco Security Products

DSC is a world leader in electronic security. From our revolutionary control panels, to our industry-leading IP alarm monitoring products and now to our sleek, contemporary self-contained wireless panels, DSC has always been front and center in the security space.

We Lead Into the Future

DSC (Digital Security Controls) introduced the industry's first small and attractive security keypads and micro-processor-based alarm panels that set new standards for performance, convenience and ease-of-use.

DSC continues to innovate in the areas of superior security monitoring, Internet security communications and wireless security products. We design and manufacture security control panels, detection devices, communication products and structured cabling solutions and our products are in homes and businesses across the globe.

A Global Brand

DSC is a global brand with its headquarters in Toronto. We are recognised by our distribution partners and as well as integrators and security dealers for leadership and expertise — and for products of superior performance and reliability in more than 140 countries. Our state-of-the-art manufacturing facilities in Canada and Italy and our teams of leading engineers and security experts are continuously developing the next innovations of quality, reliable security products. We are dedicated to achieving the most up-to-date ISO quality assurance standards and to Six Sigma methodology for superior product efficiency, performance and reliability.

Technology and Experience – An Unbeatable Combination

DSC puts forth an unbeatable combination of leading-edge technology and industry experience. The results are RELIABLE, FLEXIBLE, DURABLE security solutions of the highest QUALITY that are easy to install, easy to use, and are easily UPGRADEABLE. It's simple. We know this space better than anyone. And we have for over 30 years. So, when you need exceptional security products that work when it matters most, look to DSC.

For What Matters Most



Controls



Detectors



Communication



Wireless



www.dsc.com



BENTEL SECURITY embodies a legacy of design and power: exploiting newest technologies, the quest for perfection continues with a complete range of intrusion security, home automation and fire alarm control solutions. a leader in product design and manufacturing of a complete range of intrusion security alarm control equipment and accessories.

Advanced Technology and Superior Value

Experience, technology, market responsiveness and extensive research have made Bentel the brand of choice among customers wishing to ensure the highest level of protection for families, business people and property.

Known for the flexibility of solutions, Bentel Security's client base is a very diversified one, ranging from hospitals, banks, manufacturing facilities, shopping centres, public buildings, museums through to residential customers around the world.

Products include security panels, TouchScreen keypads apps, security programming software, alarm communication receivers, GSM/GPRS communicators, telephone dialers, alarm sirens, smoke detectors, motion detectors, glass-break detectors, analogue sensors, addressable devices, call points, power supplies, accessories and batteries.

Technical Support

Forever dedicated to enhanced userfriendliness, Bentel Security complements the range of easy-to-install and easy-to-use products with incomparable on-the-job support for professional Bentel technicians, making it a recognized easy-to-sell solution for installers.

The Bentel web site and qualified Bentel technical specialists offer incomparable on-the-job support for professional Bentel technicians. Installation and programming is fast and intuitive.

Innovation

In the technology age the world is changing quickly. Seasoned Bentel engineers discriminate carefully between practical advanced solutions and flashy unsustainable trends.

In order to satisfy the changing needs of customers, Bentel Security has developed increasing connectivity for its products; for example, adding to communications capability through TCP-IP protocols and transmission through Ethernet and GSM/GPRS networks.

Being part of the Global Tyco Engineering Community, more exciting innovations are on the way as Bentel benefits from increased research and development resources.

Advanced Technology Superior Value



Controls



Keypads



Communication
& Wireless



Detectors



www.bentelsecurity.com



Visonic is a world leading developer and manufacturer of high quality wireless intrusion alarm and safety systems and components. The company's dedication to innovation and its numerous technological breakthroughs over the past years have resulted in pioneering wireless security solutions.

Expanding the Boundaries of Security

Visonic has long been at the forefront of security innovation. Today, Visonic is the internationally recognized brand for the most advanced and reliable wireless home security systems. The brand is well-known for its PowerCode technology, launched in year 2000, and already field-proven in more than 1,000,000 wireless systems installations worldwide.

In 2010, after almost four years of intensive R&D, Visonic launched the new PowerG wireless technology, delivering even greater reliability and with unmatched benefits to security professionals, central monitoring stations and end-users.

The broad offering based on the PowerMax and PowerMaster families of wireless intrusion alarm systems, are targeted to varying needs and budgets. All Visonic's control panels can be connected to a wide range of wireless peripherals, including motion detectors, safety sensors, alarm communicators, sirens, keyfobs and more.

Global Presence

The Visonic brand is manufactured in a 10,000m² state-of-the-art manufacturing plant in Kiryat Gat, Israel, and sold through a network of subsidiaries, distributors, and sales representatives in more than 100 countries.

Positioned for future growth

The effectiveness of our products; The uniqueness of our advanced technologies ; The strength of our brand ; The quality of our people. All of these combine to stand as a benchmark for the entire security industry and as an assurance for our customers of Visonic's readiness to guide them into a new and more secure way of living.

Protecting Lives Around the World



Controls



Detectors



Communication



Wireless



www.visonic.com



Central Monitoring Stations worldwide have made Sur-Gard the brand of choice for alarm receiving equipment.

Sur-Gard

Central Monitoring Stations worldwide have made Sur-Gard the brand of choice for alarm receiving equipment. This recognition comes from decades of experience in the engineering, manufacturing, service and support of central stations receivers. Sur-Gard is known as the number one brand for receiving equipment with numerous patents and awards for innovation and leadership giving it a strong competitive edge within the industry.

Sur-Gard products cover a range of applications from proprietary applications requiring reception of a couple of accounts through to full central monitoring stations with hundreds of thousands accounts using "Virtual" receivers with automatic redundancy. Sur-Gard is committed to supporting our customers as they grow their businesses by helping them understand and incorporate new technologies and services.

Monitoring Your Solutions



Receivers



www.surgard.com

Every day, Tyco brands help to make the world safer in many industries around the globe. Protecting people and property is a serious responsibility. Our systems and equipment must be reliable, technologically advanced and effective.

- We help protect and control transportation systems on 5 continents including the London Underground Railway, with 3,000,000 passengers daily
- Our systems are used by 80% of the world's top 100 retailers
- We help secure over 2,000,000 commercial enterprises worldwide including the Petronas Towers in Kuala Lumpur, formerly the world's tallest buildings
- Our systems help protect 300 international airports, including Hong Kong, which can accommodate 87,000,000 passengers per year
- We help protect thousands of public buildings worldwide including all 700 U.S. Federal courthouses
- Tyco helps protect 75% of the top 100 refineries including the 100,000-ton EQUATE polypropylene plant in Kuwait
- Tyco secures and protects 90% of the Fortune 500 companies





Heathrow Boulevard 3, 282 Bath Road, West Drayton, UK, UB7 0DQ
Tel: 0208 750 5660 Fax: 0208 897 6520
www.tycosecurityproducts.com