

CEM Systems Access News

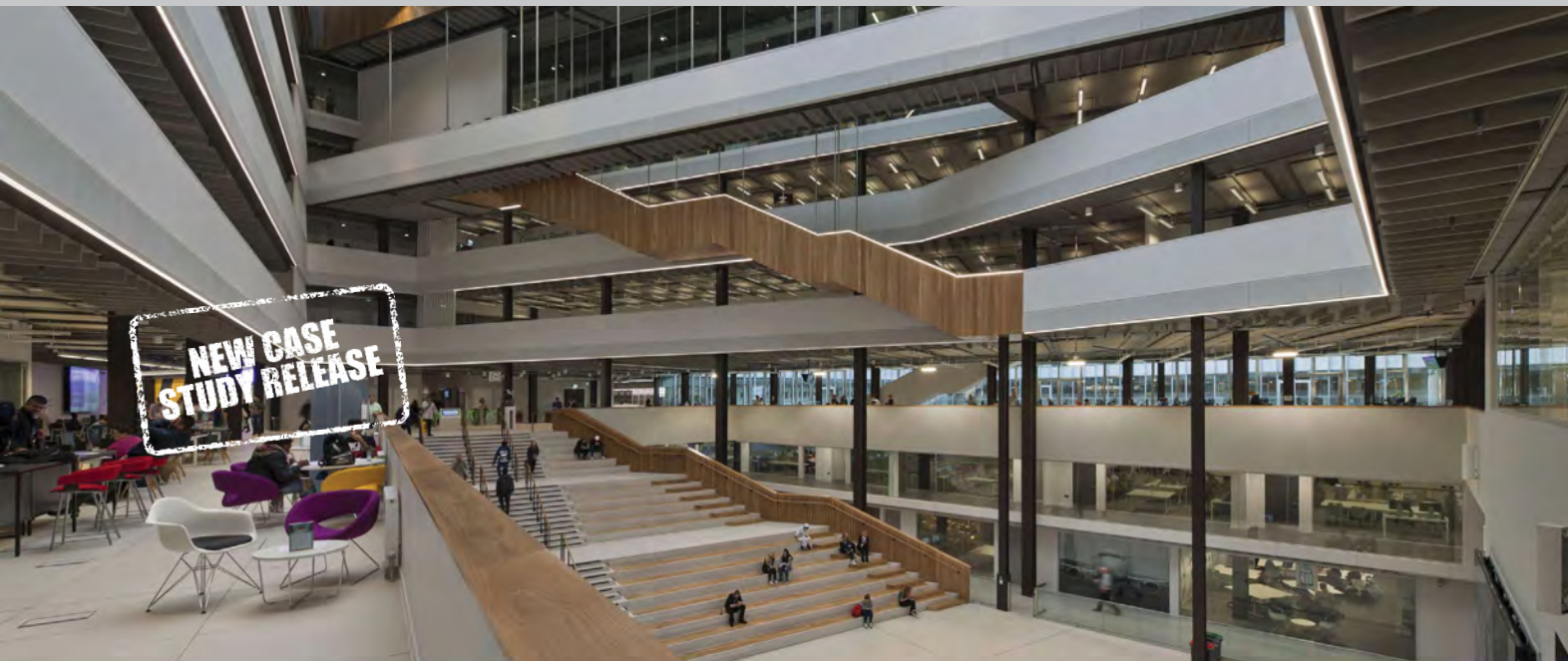
SECURITY MANAGEMENT SOLUTIONS AT SCOTLAND'S £228M SUPER COLLEGE

CITY OF GLASGOW COLLEGE

WHAT'S INSIDE?

- 01 Security at City of Glasgow College
- 03 CEM Business Partner's of the Year
- 05 AC2000 v10.0 software release
- 07 AC2000 Enterprise solution
- 09 Tyco Connected Partner Program





CITY OF GLASGOW COLLEGE

Security Management Solutions at Scotland's £228m Super College

The City of Glasgow College is a twin campus college delivering over 2,000 programmes to 40,000 students. For security purposes the City of Glasgow College access control system needed to be sizable to cope with 30,000+ cardholders and 1,000+ access points, but also have the flexibility to be adapted and modified as the needs of the college inevitably changed. CEM Systems partner, FES, had responsibility for the commissioning and installation of the complete security solution.

"Due to the sheer size, complexity and uniqueness of the City of Glasgow College project the CEM Systems AC2000 System was the ideal access control solution of choice. The college required a fully integrated access control, intrusion and CCTV system that could be connected to the clients

IP network and incorporate the very latest in security technology. With an innovative range of intelligent products and an approachable and local support team, CEM Systems had the necessary skillset to adapt and modify security hardware and software to fit our changing requirements".

Frank Rafferty, Design Manager, Communications, Fire & Security, FES Group

Security Requirement

The college required unrestricted free access to public areas of the campus with security then gradually increased to protect areas such as the library, data centres and plant rooms. Security was also required for college staff offices, high tech classrooms and workshops, lecture theatres, TV and radio studios and the new 10

storey student accommodation building. College entry is controlled using highly encrypted electronic DESFire™ smart cards with security barriers and card readers positioned at entrances to restricted zones. Utilizing the CEM Systems AC2000 Smartcard Utility software application, the college can uniquely maintain on-site control of their own smart card keys in an intuitive and step-by-step way.

Wireless Access Control

Over 970 college doors were secured using SALTO Sallis Escutcheon wireless locks and utilising Power over Ethernet technology, with real time wireless door events seamlessly integrated into the CEM Systems AC2000 system for centralised control and monitoring.



CEM Systems S610e DESFire IP readers with keypad for additional PIN security were also installed, along with CEM Systems Pass smart card readers and DCM 350 intelligent two-door door controllers to control external doors and other high security pinnacle campus areas.

Integrations

High level integrations with multiple CCTV, fire and intrusion systems were also required for the project. FES purchased the CEM Systems AC2000 Pelco Endura CCTV interface and Galaxy SIA interface which enables alarms to be graphically represented on the central AC2000 alarm monitoring application. The open architecture CEM Systems AC2000 API (Application Programming Interface) also enabled the college's internal IT team to conduct their own interfaces with the access control system.

"The CEM Systems AC2000 API functionality was successfully used to enable the integration of our student management system with the AC2000 access control system. It has given our development team the tools to automate the creation of student cardholder records and grant access privileges to those students using college accommodation areas. By taking full advantage of the CEM Systems AC2000 API tool, the end result is the integration of multiple college systems on campus which has greatly helped speed up our college processes."

Mark Campbell, Systems Developer, City of Glasgow College



Time & Attendance App

In 2018 the college installed the CEM Systems emerald access control terminal for Time & Attendance (T&A) trial purposes on speed gates. With an integrated access control and staff 'Time & Attendance' app directly on the emerald terminal at the gates, staff can record their T&A IN/OUT times for human resource monitoring and reporting.





Pictured from left to right: Frank Rafferty (FES Group), Mark Power (Net-Ctrl), Philip Verner (Johnson Controls), Lee Georgio (Net-Ctrl), Mohamed El Kassas (IFSS), Ganesan Natarajan (Tyco U.A.E)

WINNERS OF CEM SYSTEMS BUSINESS PARTNER OF THE YEAR AWARDS 2018

The CEM Systems Business Partner of the Year Awards took place at the Galgorm Resort & Spa, Northern Ireland.

The winners of the CEM Systems Business Partner of the Year Awards, EMEA, were honoured at CEM Systems' annual security conference at the Galgorm Resort & Spa, Northern Ireland.

"We are very fortunate to be involved in many exciting and often iconic access control projects around the world and 2018 is no exception. Through customer endorsements and the support of our committed Approved Reseller channel, we have successfully opened up CEM Systems innovative access solutions to many new sectors and territories throughout Europe, Middle East and Africa (EMEA)."



Philip Verner, Sales Director, EMEA, Johnson Controls.

FES Group was presented the award for their continued success within large, integrated security projects throughout Scotland. Net-Ctrl was recognized for their success within the education sector in the South of England and Unibelus for the installation of CEM Systems products within Belarus and Eastern Europe. Integrated Fire & Safety Solutions Ltd. (IFSS) were also presented an award for their project work with Safaricom Telecoms, Kenya and Tyco Fire & Security U.A.E for working with CEM Systems on some of the largest, complex and most prestigious security projects in the Middle East, including Muscat International Airport, Oman.

Winners
UK and Ireland North FES GROUP
UK and Ireland South NET-CTRL
Europe UNIBELUS
Africa INTEGRATED FIRE & SAFETY SOLUTIONS LTD (IFSS)
Middle East TYCO FIRE & SECURITY U.A.E



PROJECT OF THE YEAR AWARD 2018 – MUSCAT INTERNATIONAL AIRPORT

As the largest infrastructure project in Oman, Oman Airports required a large scale, fully integrated security solution to secure Muscat International Airport's new \$1.8 billion Terminal 1 and its vast number of outlying annex buildings.

At the same time CEM Systems was also awarded the contracts to secure the new Salalah International Airport and Duqm Airport in Oman and it was imperative that all three airports share a commonality of CEM Systems security technologies and infrastructure. This award helps congratulate Oman Airport in their achievement of a standardized, best-in-class security platform across multiple Oman airports.

"The flexibility and high quality offered by the CEM Systems AC2000 security management system was a key factor in its suitability for Muscat International Airport. Using a single airport renowned access control provider and standardized intelligent CEM Systems hardware across all of Oman Airports, we believe we have set the standards for seamless, best-in-class airport security management within the Middle East."

Ali Baqheri, Head of Security Systems, Oman Airports.

"As the largest infrastructure project in Oman, Muscat International Airport required a large scale, fully integrated security solution to secure Terminal 1 and its vast

number of new outland buildings; with access control, video and perimeter detection fully integrated with other critical airport systems. The powerful CEM Systems AC2000 Airport access control system along with comparable CEM hardware devices were successfully installed into Muscat International Airport along with other airports in Oman. We congratulate Oman Airports in their achievement of a standardized, high quality security platform across multiple Oman airports".



Philip Verner, Sales Director, EMEA, Johnson Controls.

AC2000 V10.0 SOFTWARE RELEASE – THE DIFFERENCE IS NIGHT & DAY

CEM Systems AC2000 v10.0 software platform was recently released to the market. Working closely with our customers and incorporating valuable user feedback into the software design process, v10.0 encompasses many new and exciting features that enhance user experience and add greater flexibility when configuring your access control system.

What's new?

Unrestricted AC2000 Authorization Levels

With powerful user definable fields, AC2000 software modules have always offered customers an incredible level of flexibility. AC2000 v10.0 software offers customers even further flexibility with the ability to create an unrestricted number of 'Admin' and 'User Authorization Groups'. Unlimited user group templates

can be created based on appropriate AC2000 applications, company restrictions etc. Multiple users can then be conveniently assigned to a single group template which greatly reduces the administrative time it takes to configure user system privileges.

Visitor Escort

A new 'Visitor Escort' functionality has been added. This gives system administrators the ability to optionally assign an escort to each visitor record. Once

assigned, visitors can only gain access through secured areas when accompanied by their escort. This has the benefit of offering enhanced visitor management where companies wish to restrict the free movement of visitors.

Integrations

For an enhanced video integration experience, the AC2000 'Video Viewer' and 'Video Popup' applications have been updated, with user improvements to video controls and information on display.



New modernized look and feel for AC2000 v10.0 workstation software applications – with options to toggle between light and dark themes.

AC2000 Workstation Client applications have been restyled with a modern, clean and intuitive user interface. The restyle has focused on the user experience with improvements to all visual elements of the applications, including a simplified colour palette, simplified layout of applications

and menu bar navigation, and the restyling and simplification of icons across all applications. The modern, clean and highly intuitive interface presents system information, selections and actionable content the way users require them, when they require them.



New AC2000 Integration Interfaces and OEMs

AC2000 SnapShell® ID and passport scanner interface

AC2000 System administrators can supplement ID records with a cardholder's passport or driver license information.

Suprema Bio Mini enrolment support for integrated biometric and access control enrolment. Biometric enrolment can now be captured via the Suprema Bio Mini unit; an alternative to the CEM S610f fingerprint enrolment reader.





AC2000 ENTERPRISE ... THINKING GLOBAL, ACTING LOCAL

The smarter, more connected way to manage multiple sites anywhere in the world. Each business unit's security measures can be administered at a local or centralised level depending on customers' daily operational requirements.

"As CEM Systems works with many large, complex projects we have always had the ability to link multiple sites and offices together using AC2000 Standard System Link. Now AC2000 Enterprise takes multi-site systems linking to a whole new level. After months of customer collaboration and extensive industry research we effectively developed a powerful Access Control Enterprise design structure and specification that overcomes the pitfalls and challenges typically experienced by users when using Enterprise systems".



Maggi Chesney
Software Manager,
CEM Systems

Customers Asked So We Delivered



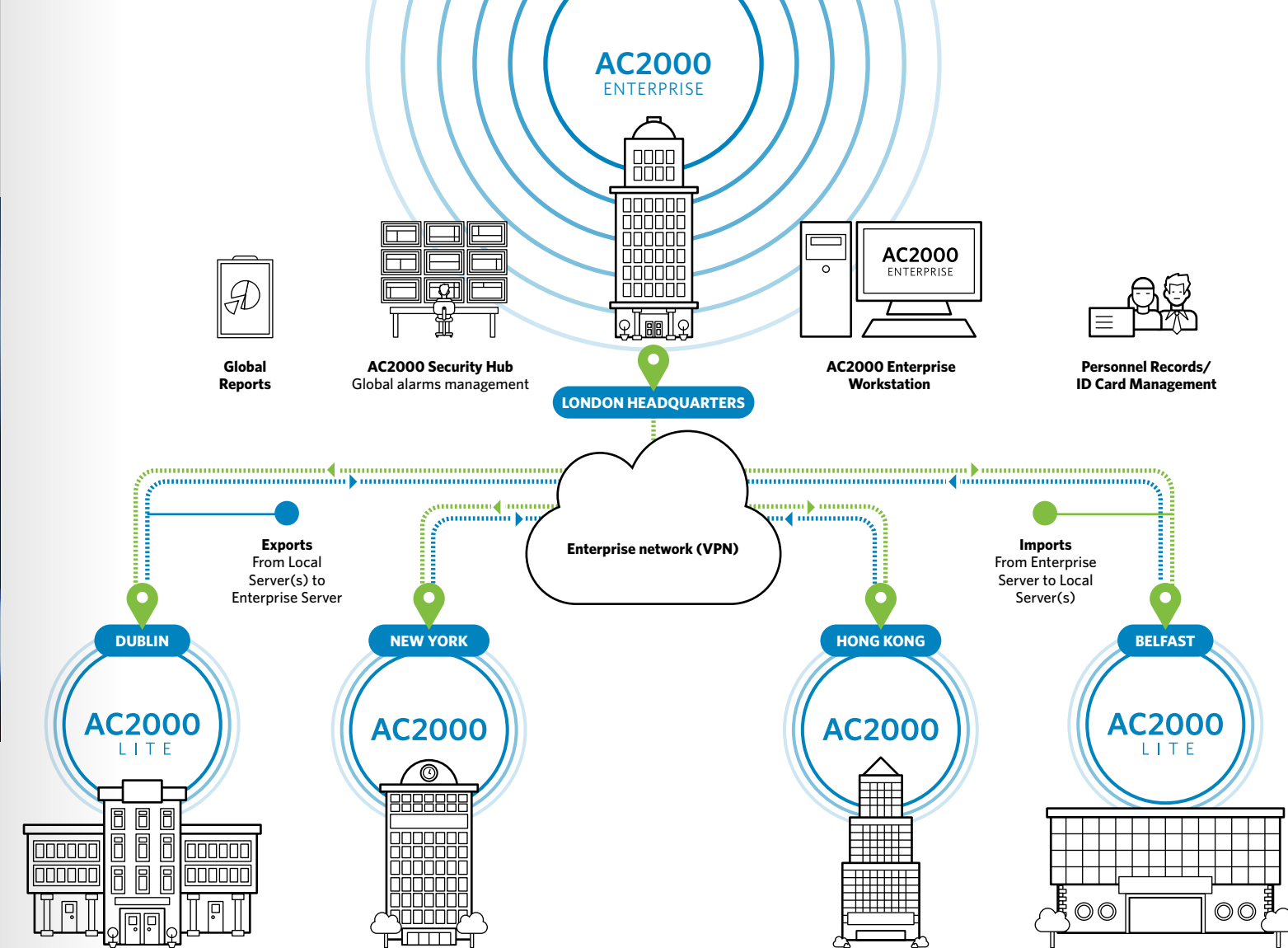
Global alarms management

AC2000 Enterprise provides a powerful, centralised alarm management solution for all sites. Using the AC2000 Security Hub alarms monitoring application, security operators have the flexibility to globally acknowledge and cancel alarms from local sites. They also have the ability to remotely open doors in the absence of a local operator. This centralised alarms processing reduces administrative costs and allows unified company policies to be implemented.



Global personnel and ID card security management

Customers required a centralised personnel security management solution across multiple sites. With AC2000 Enterprise, Personnel records and ID cards/credentials can be centrally added to the global Enterprise Server and simultaneously exported to the appropriate local site(s) for efficient access control. Records can also be exported from each AC2000 Local Enterprise site to other connected sites which reduces the need for personnel to enrol at each site they visit.



Designed around a single AC2000 Enterprise server centrally connected to an unrestricted number of AC2000 Local servers, AC2000 Enterprise provides users with a superior centralised access control and integrated alarms monitoring solution across multiple sites and geographic locations.



Advanced global reports

AC2000 Enterprise provides reporting capability across linked sites. Customers can easily report on all company, device and card holder activities across the Enterprise deployment. This consolidation of data across multiple sites saves the end user time in collating multiple, cumbersome reports.



Multi version software support between sites

A pain point for Enterprise customers lies in the complexity of adding new sites (with different software versions) to their Enterprise network as their organisation grows. With AC2000 Enterprise, multiple versions of AC2000 software can be supported. All servers can also be upgraded independently of each other offering future seamless upgrades.



Global time-zone support

The central AC2000 Enterprise server and Local site servers are not tied to a single time zone. Each server is set to its local time zone for local access control independence, but is still able to connect to the central AC2000 Enterprise server.

Book your demo today
cem.info@tycoint.com



CEM Systems Access News



CEM SYSTEMS JOINS TYCO'S CONNECTED PARTNER PROGRAM

CEM Systems is pleased to be a part of Tyco's
Connected Partner Program.

Register to receive
a complete integration
development package
to help you quickly
write your integration,
includes:

- Software
- Licenses
- Documentation
- Sample code
- Dedicated engineering support
- Marketing support

Visit

[https://connectedpartnerprogram.
partnerproducts.com](https://connectedpartnerprogram.partnerproducts.com)

Tyco's Connected Partner Program is designed for product manufacturers and software developers, and offers access to all the tools needed to build integrations with Tyco products, including software, hardware, documentation, sample code, dedicated engineering and marketing support.

Connected Partners will now have the opportunity to develop integrations with CEM Systems AC2000 Access Control platform, in addition to the Tyco product brands already in the program, including American Dynamics, Illustra, DSC, exacq and more.

Tyco's Connected Partner Program for CEM Systems AC2000 offers a complete integration package, with a VM build, AC2000 software, API and licenses installed along with test tools, to meet and simplify our partner's integration needs.

For a growing list of the available CEM Systems integrations with both third party manufacturers and the Johnson Controls family of products, visit [https://connectedpartnerprogram.
partnerproducts.com](https://connectedpartnerprogram.partnerproducts.com)

If you are a product manufacturer or software developer, take advantage of these opportunities and join the Connected Partner

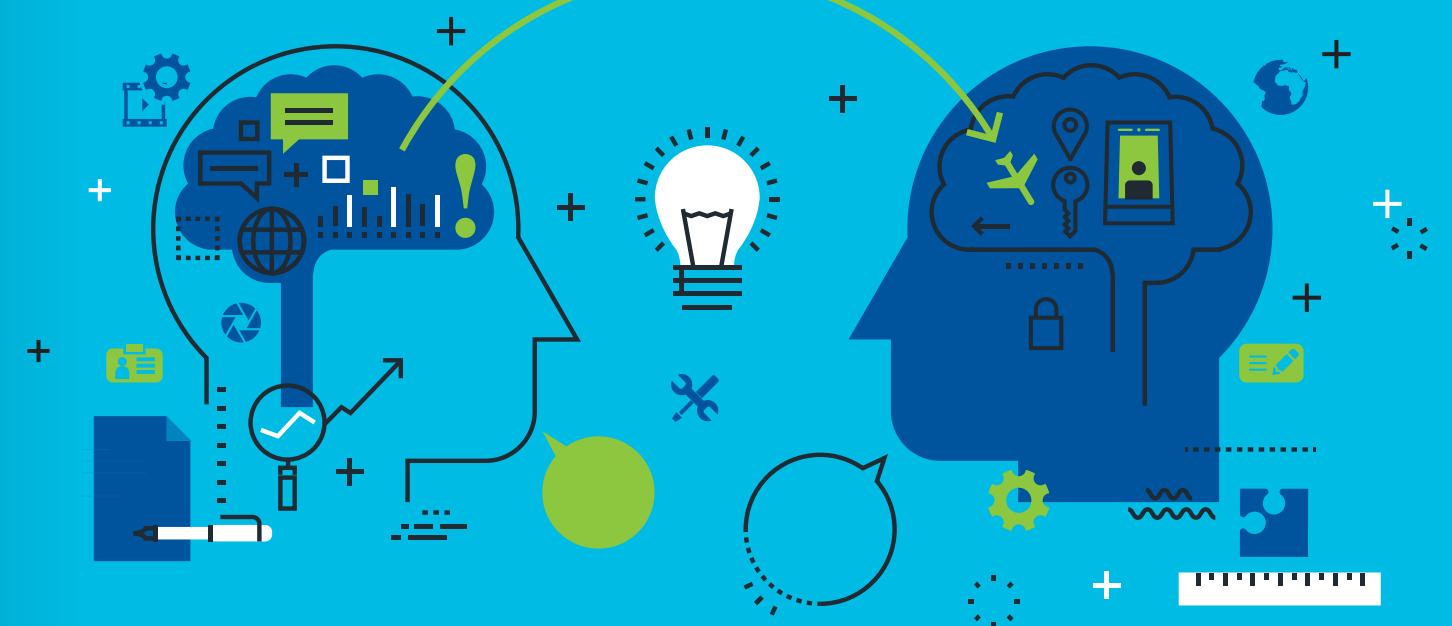
Program today! To get started, please contact the Connected Partner Program Team.

Expand Your Opportunities

Tyco's Connected Partner Program brings together industry leading solutions allowing partners to promote and market their third party solutions throughout Johnson Controls Security Products brands.

When enrolling in the Connected Partner Program, partners have the opportunity to leverage our Tyco sales teams to promote their solutions on a global scale.

⚠ (Please note - This program is not intended for product resellers and distributors.)



INFORM, INSPIRE, INVOLVE. CEM SYSTEMS SECURITY SEMINARS 2019

Throughout the remainder of 2018 and the first quarter of 2019 CEM Systems will be hosting a series of Security Seminars across the EMEA region.

Our industry experts will **INFORM** you on the latest developments in the security industry; **INSPIRE** you on the possibilities available with our intelligent security product

range; and will look to **INVOLVE** you in demonstrations and discussions to help shape our future innovations.

To learn more or to find out when the next event in your region will be, please contact your account manager or email cem.sales@tycoint.com

STAY IN THE KNOW

Subscribe to receive emails regarding product updates, events, promotions and training

Following the implementation of the General Data Protection Regulation (GDPR) on May 25, 2018 you may not have received any emails from CEM Systems, if you did not confirmed your subscription. In order to receive communications relating to the latest CEM Systems products, promotions, technical bulletins, events and training opportunities, please register or update your email preferences at <https://www.cemsys.com/contact/subscribe-to-cem/>

For details on how we protect and manage your personal data, please visit <http://www.johnsoncontrols.com/legal/privacy>



tyco

195 Airport Road West, Belfast, BT3 9ED, Northern Ireland.
T: +44(0)2890 456767 E: cem.sales@tycoint.com
www.cemsys.com

© 2019 Johnson Controls. All rights reserved.

**Johnson
Controls** 