

# Avigilon Control Center Interface

## Avigilon Control Center Video Management Systems



### Key Features

- CEM Systems AC2000 seamless integration with Avigilon Control Center Video Management Systems (VMS)
- Associate access control alarms with digital video footage
- Live video feed activated directly from AC2000 Security Hub module
- Camera icons can be positioned in AC2000 Security Hub module alongside access control readers
- Display up to 16 individual camera feeds simultaneously in a single screen matrix
- Capture images from live or recorded video and saved them to common picture formats (e.g. PNG, JPG, etc.)
- Adjust camera pan, tilt and zoom via integral software control

The AC2000 video interface for Avigilon Control Center (CC) provides the ability to associate access control alarms with digital video clips, as well as to view live camera footage. This enables AC2000 to act as the central Security Management System (SMS).

AC2000 seamlessly integrates with Avigilon CC, giving the operator a range of video related facilities to generate alarm reports with recorded video playback. The interface also allows system operators to view live video feed, configure live video popup on alarm, export video playback clips, take video snapshots and control camera positioning and presets.

This high-level, two-way interface allows a user to fully integrate the power of an Avigilon CC system into the central AC2000 Security Hub application.

AC2000 Security Hub module enables all alarms, events and associated camera footage to be displayed centrally on the AC2000 security management system, including the ability to receive alarms from the Avigilon CC system such as Loss/Gain alarms and video motion alarms for cameras.

### Alarm Report with Associated Video

If an alarm event contains associated Video footage, the operator can access the footage in AC2000 Security Hub by right-clicking and selecting "View recorded footage" activating the Video Alarm Viewer.

Once the Video Alarm Viewer has launched, the actual footage is then uploaded from the VMS server. The image window will automatically display the video image from the start of the footage.

Standard video controls are available on the Video Alarm Viewer to Play, Pause, Fast Forward/Rewind, etc. The user has an option to export the video to file.

## Key Features Continues

- Trigger presets via Video Viewer or Video Popup or as a response to a reader alarm
- Receive alarms from the Avigilon system such as Video Motion

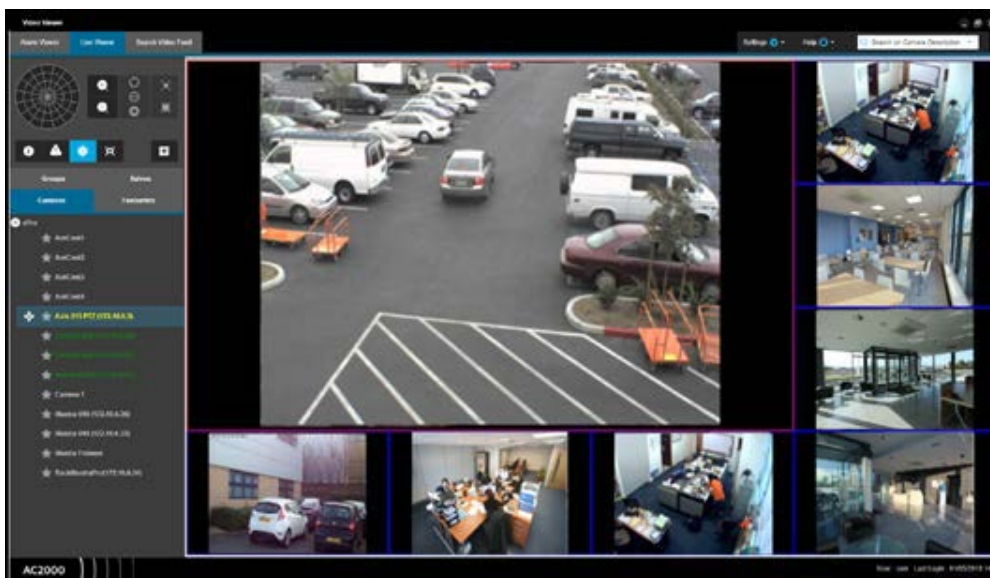
## Camera Control

A camera control facility is available for moveable cameras such as dome-based devices. The following controls are available:

- Iris and Zoom Controls
- Camera Preset Set and Run Abilities
- Pan + Tilt Control
- Lock and unlock PTZ controls of a camera

## Live Video Feed

The operator can change the number of cameras displayed on the live viewer panel using a simple selection menu and display up to sixteen cameras simultaneously. The pane layout menu allows operators to have a main camera feed surrounded by smaller camera feeds to focus on a certain camera. Each pane can be simply configured using a drag and drop facility to place the appropriate camera into the required pane.



### Grab Frame

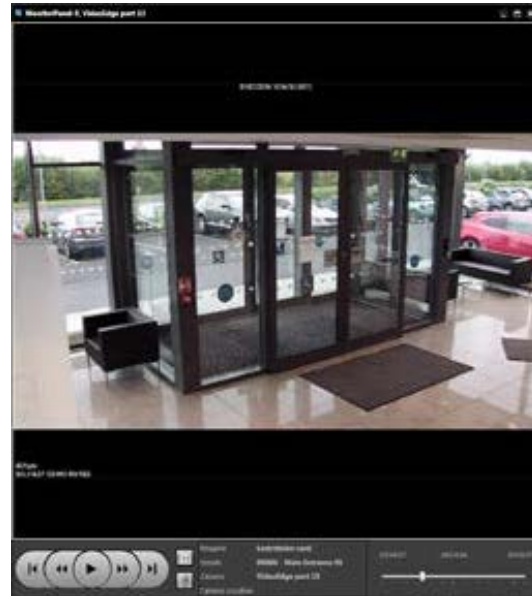
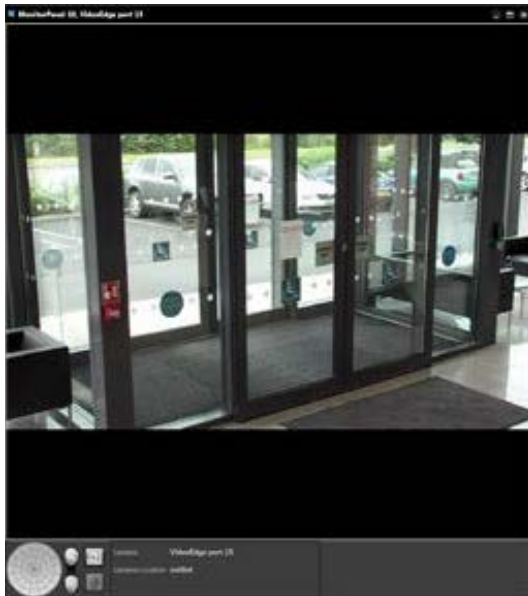
This option allows the operator to grab an image from the live or alarm feed and save it to file. The image can be saved to file as a standard bitmap (BMP), PNG, JPEG, TIFF or EXIF picture file.

### Video Configuration

AC2000 DVR Import Tool simplifies the setup of NVR servers for use with AC2000 Security Management System. All cameras on the VMS server are imported and configured automatically.

### Video Popup

The Video Popup application allows users to view alarms as they occur. The user can view the alarm in real time without having to wait until the video footage is stored. The user can take control of PTZ cameras to track the cause of the alarm and this footage will be recorded. The camera feed can be set to switch to higher priority alarms.



## Requirements

Product Code	
AC2000 AC2000 Airport	V10.0, 10.1, 10.2, 10.3
Avigilon Control Center VMS Integration uses SDK version	6.10.0.24

(For other AC2000 versions please contact [cem.sales@tycoint.com](mailto:cem.sales@tycoint.com))

## Ordering Information

Product Code	Description
SWVINT-AVIG	AC2000 Avigilon Control Center Interface

To order contact [cem.sales@tycoint.com](mailto:cem.sales@tycoint.com) or call +44(0) 2890 456 767

## Related Products



- AC2000
- AC2000 Airport

---

## About Johnson Controls

Johnson Controls is a global diversified technology and multi-industrial leader serving a wide range of customers in more than 150 countries. Our 120,000 employees create intelligent buildings, efficient energy solutions, integrated infrastructure and next generation transportation systems that work seamlessly together to deliver on the promise of smart cities and communities. Our commitment to sustainability dates back to our roots in 1885, with the invention of the first electric room thermostat.

For additional information, please visit [www.cemsys.com](http://www.cemsys.com) or follow CEM Systems on LinkedIn and Twitter.

© 2021 Johnson Controls. All rights reserved. Product offerings and specifications are subject to change without notice. Actual products may vary from photos. Not all products include all features. Availability varies by region; contact your sales representative.

CEM/B/374 Rev C