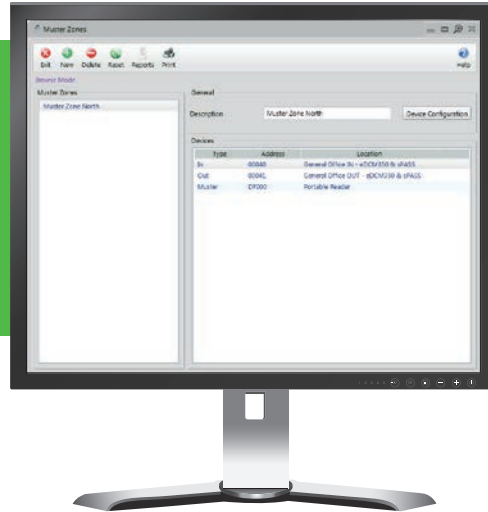


# AC2000 Muster Zones



## Features that make a difference:

- Record the safe evacuation of staff
- In an emergency event cardholder's must present cards at a Muster reader in a safe area
- Automatic printout of Muster report upon an Alarm input i.e. Fire alarm
- Any reader can be designated as an Entry or Exit reader
- Re-muster facility
- Advanced muster reports

The AC2000 Muster Zones application is used for emergency situations where card holders must congregate in a dedicated 'safe' location. The application can be used both in the evacuation of card holders to a location away from the site (or zone) or when necessary it can be used to enable card holder's to move to a particular safe location within the premises. AC2000 Muster Zones is used in conjunction with the AC2000 Zone Monitoring application.

In cases where card holders need to evacuate to a location away from the premises, personnel swipe an 'In' reader when they arrive on site (at a turnstile for example) and then swipe an 'Out' reader when leaving. This means that administrators can see who is left in the

zone and who has exited the premises successfully. An automatic printout of the muster report will also be available to administrators to facilitate an offsite head count of evacuated personnel.

In situations where personnel and card holders must 'Muster' at a location within the premises, a muster point reader can be installed/setup on the system. The personnel would swipe an 'In' reader when entering a site and then swipe at a dedicated 'Muster' reader at a safe location on site. Should the muster reader be located in the danger area, muster zones also have the capability of being reset - 'Re-muster zones'. This offers customers the flexibility and adaptability to change muster locations as required.

## Mustering Configuration

AC2000 Muster Zones provides the ability to muster in two ways. The first is outside the zone or site and the second is to muster in a safe place within the zone. In Zone Mustering is achieved by having a safe point in the site/zone where personnel can securely present ID cards at a muster reader. The personnel would swipe an 'In' reader when entering a site and then swipe at a dedicated 'Muster' reader at a safe location on site.

## Resetting Muster Zones

System administrators can reset Muster Zones at any time e.g. during an emergency situation if the Muster reader is located in the danger zone.

## Reporting

Advanced reports can be easily generated from an AC2000 workstation to give an accurate indication of all cardholders who have reached the muster points safely. 'In-Zone' reports & 'Muster' reports highlight those cardholders who are on site (within zone) but who have not yet reached the safe muster area. Muster reports can be configured to be automatically printed in

the event of an emergency situation to allow for an offsite head count of evacuated personnel. The automatic report allows personnel to be quickly accounted for, as the muster report shows all card holders currently swiped into the building.

## Portable Mustering Solution

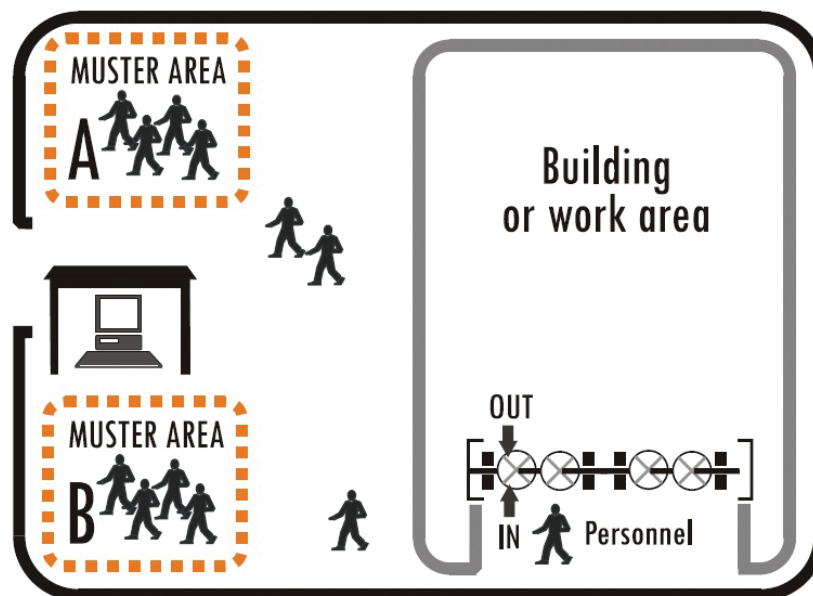
CEM portable readers aid the mustering process as they allow remote and temporary verification of cardholders. This is particularly beneficial if the muster reader is in the danger zone and a portable solution is required.

## Typical use cases

AC2000 Muster Zones was initially developed for petrochemicals but can be used anywhere where evacuation may be needed, particularly in schools and office buildings.

## Requirements

- AC2000 v5.2 software & upwards
- AC2000 Airport v5.2 software & upwards
- AC2000 Lite v5.7 software & upwards



## Related Products



AC2000  
AC2000 Airport  
AC2000 Lite

[www.cemsys.com](http://www.cemsys.com)