

AC2000 VideoEdge Interface

American Dynamics VideoEdge Network Video Recorder



Key Features

- CEM AC2000 seamless integration with American Dynamics VideoEdge Network Video Recorder
- Associate access control alarms with digital video footage
- Live video feed activated directly from AC2000 Security Hub Application
- Live video pop-up based on alarm priority or time
- Export video clips
- Take video snapshots
- Receive alarms from the VideoEdge system such as Video Motion
- Camera icons can be positioned in Security Hub module alongside access control readers
- Display up to 16 individual camera feeds simultaneously in a single screen virtual matrix
- Adjust camera pan, tilt, and zoom via integral software control

The AC2000 video interface for American Dynamics VideoEdge Network Video Recorders (NVR) provides the ability to associate access control alarms with digital video clips, as well as to view live camera footage. This enables AC2000 to act as the central Security Management System (SMS).

AC2000 seamlessly integrates with VideoEdge, giving the operator a range of video related facilities to generate alarm reports with recorded video playback. The interface also allows system operators to view live video feed, configure live video popup on alarm, export video playback clips, take video snapshots, and control camera positioning and presets.

This high level two-way interface allows a user to fully integrate the power of an American Dynamics VideoEdge system into the central AC2000 Security Hub application.

AC2000 Security Hub module enables all alarms, events and associated camera footage to be displayed centrally on the AC2000 security management system, including the ability to receive alarms from the VideoEdge such as video analytics.

VideoEdge Network Video Recorder

VideoEdge Network Video Recorder is a powerful, high-performance VMS designed to record and manage video from standard, high-definition and megapixel cameras.

Alarms with Associated Video

If an alarm event contains associated video footage, the operator can access the footage within the AC2000 Security Hub application which will activate a Video Viewer.

Once the Video Viewer has launched, the actual video footage is then downloaded from the VideoEdge system. The viewer window will automatically display the video playback from the start of the footage.

Standard video controls are available on the Video Viewer to Play, Pause, and Fast Forward/

Rewind. This footage can then be exported to a file if required or a simple snapshot picture can be saved.

Additionally system operators can view archived video footage by running alarms reports in the AC2000 Reports application.

Recorded Video Search and Retrieve

The Video Viewer also allows the user to search for alarms with video footage using various criteria which can then be replayed by clicking on the requested alarm detail.

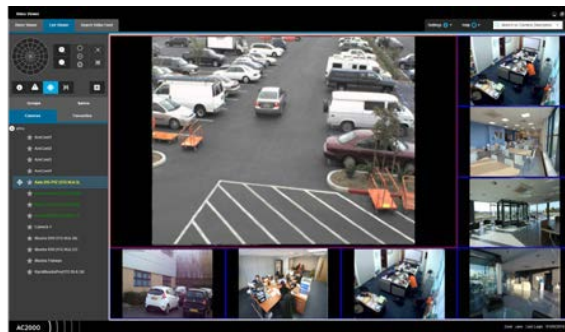
Camera Control

A camera control facility is available for moveable cameras such as dome-based devices. The following controls are available:

- Zoom In and Out
- Camera Preset Set and Run Abilities
- Pan + Tilt

Live Video Feed

The operator can change the number of cameras displayed on the live viewer panel using a simple selection menu and display up to sixteen cameras simultaneously, each in its separate pane. The pane layout menu allows operators to have a main camera feed surrounded by smaller camera feeds to focus on a certain camera. Each pane can be simply configured using a drag and drop facility to place the appropriate camera into the required pane.



Live Video Popup

The Video Popup application allows users to view alarms as they occur on AC2000, including native and integrated system alarms sourced from other IDS, fire and perimeter fence systems etc. The user can view the alarm in real time without having to wait until the video footage is stored. The user can take control of PTZ cameras to track the cause of the alarm and this footage will be recorded. The camera feed can be set to switch to higher priority alarms.



Import Tool

AC2000 VideoEdge Import Tool simplifies the setup of NVR servers for use with AC2000 Security Management System.

All cameras on the NVR server are imported and configured automatically, including refresh or updates. The user can opt to overwrite or not previously imported camera settings.

Requirements

AC2000 AC2000 Airport AC2000 Lite	V8.0	10.1	10.2	10.3
Integration uses SDK version	4.9	5.2	5.2	5.4

(For other AC2000 versions please contact cem.sales@tycoint.com)

Ordering Information

Product Code	Description
SWVNVR-AD	AC2000 American Dynamics VideoEdge Interface

To order contact cem.sales@tycoint.com or call +44(0) 2890 456 767

Related Products



- AC2000
- AC2000 Airport
- AC2000 Lite

About Johnson Controls

Johnson Controls is a global diversified technology and multi-industrial leader serving a wide range of customers in more than 150 countries. Our 120,000 employees create intelligent buildings, efficient energy solutions, integrated infrastructure and next generation transportation systems that work seamlessly together to deliver on the promise of smart cities and communities. Our commitment to sustainability dates back to our roots in 1885, with the invention of the first electric room thermostat.

For additional information, please visit www.cemsys.com or follow CEM Systems on LinkedIn and Twitter.

© 2021 Johnson Controls. All rights reserved. Product offerings and specifications are subject to change without notice. Actual products may vary from photos. Not all products include all features. Availability varies by region; contact your sales representative.

CEM/B/212 Rev J