

AC2000 IndigoVision Interface

IndigoVision Network Video Recorder



Key Features

- Associate access control alarms with digital video footage
- Live video feed activated directly from AC2000 Security Hub application
- Live video pop-up based on priority or time
- Real time visual tracking and recording during alarm conditions
- Camera icons can be positioned in the AC2000 Security Hub module alongside access control readers
- Display up to 16 individual camera feeds simultaneously in a single screen virtual matrix
- Adjust camera pan, tilt, and zoom via integral software control
- Take live video snapshots
- Export recorded footage

The AC2000 video interface for IndigoVision Network Video Recorder (NVR) provides the ability to associate access control alarms with IndigoVision NVR digital video clips. This enables AC2000 to act as the central Security Management System (SMS).

The AC2000 DVR Viewer module seamlessly integrates AC2000 with IndigoVision NVR, giving the operator a range of video imaging facilities to generate alarm reports with recorded video playback. The interface also allows system operators to view live video feed and control camera positioning.

The system allows a user to fully integrate the power of a IndigoVision NVR video system into the central AC2000 Security Hub application. AC2000 Security Hub enables all alarms, events and associated camera footage to be displayed centrally on the AC2000 system.

Alarms with associated video

If an alarm event contains associated video footage, the operator can access the footage within the AC2000 Security Hub which can activate the DVR Viewer.

Once the DVR Viewer has launched, the recorded video footage is then streamed from the IndigoVision NVR system. The viewer window will automatically display the video playback from the start of the footage. Standard video controls are available on the DVR Viewer to Play, Pause, Fast Forward and Export Video to file.

Additionally system operators can view archived video footage by running alarm reports in the AC2000 Extended Reports application.

Recorded Video Search and Retrieve

The DVR Viewer also allows the user to search for alarms with video footage using various criteria which can then be replayed by clicking on the requested alarm detail.

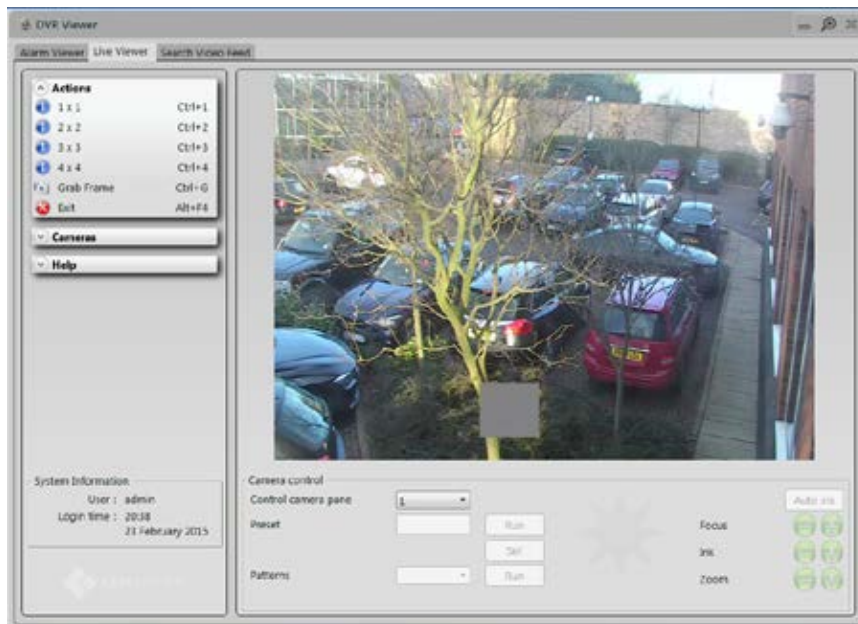
Camera control

A camera control facility is available for moveable cameras such as dome-based devices. The following controls are available:

- Zoom Controls
- Camera Preset Selection
- Pan + Tilt Control
- Zoom and Iris Control

Live Video Feed

The operator can split the video screen into 1x1, 2x2 (4), 3x3 (9) or 4x4 (16) options allowing the operator to view live footage from up to sixteen cameras simultaneously, each in its separate pane. Each pane can be easily configured using a drag and drop facility to place the appropriate camera into the required pane. The operator can also use the Grab Frame function to take a snapshot of the live video feed.



Live Video Popup

Using the video pop-up application, live video is available based on alarm priority or time. This allows instant access to live video for certain alarms and is used with a queuing system, allowing the operator to easily view live feeds when multiple alarms are received.

Preset On Alarm

When an alarm occurs AC2000 can instruct a camera on the IndigoVision NVR system to move to a preset before recording takes place. This provides precise footage of the alarm event.

Ordering Information

Product Code	Description
SWNVN-IV	AC2000 IndigoVision NVR Interface

Requirements

- Security Hub and Video Viewer available from AC2000 v7.1 Service Pack 1 upwards
- AC2000 Airport v6.7 software & upwards
- AC2000 v6.7 software & upwards
- AC2000 IndigoVision Interface Alarm Server
- IndigoVision Alarm Server v4.7

This AC2000 interface will only operate when used with an AC2000 Workstation running on Windows 7 64bit and a PostgreSQL AC2000 CDC Server database.

Related Products



- AC2000
- AC2000 Airport
- AC2000 Lite

About Johnson Controls

Johnson Controls is a global diversified technology and multi-industrial leader serving a wide range of customers in more than 150 countries. Our 120,000 employees create intelligent buildings, efficient energy solutions, integrated infrastructure and next generation transportation systems that work seamlessly together to deliver on the promise of smart cities and communities. Our commitment to sustainability dates back to our roots in 1885, with the invention of the first electric room thermostat.

For additional information, please visit www.cemsys.com or follow CEM Systems on LinkedIn and Twitter.

© 2021 Johnson Controls. All rights reserved. Product offerings and specifications are subject to change without notice. Actual products may vary from photos. Not all products include all features. Availability varies by region; contact your sales representative.

CEM/B/140 Rev F

The power behind **your mission**